

UltraVision 3.10R20

Limitations and Remaining Anomalies

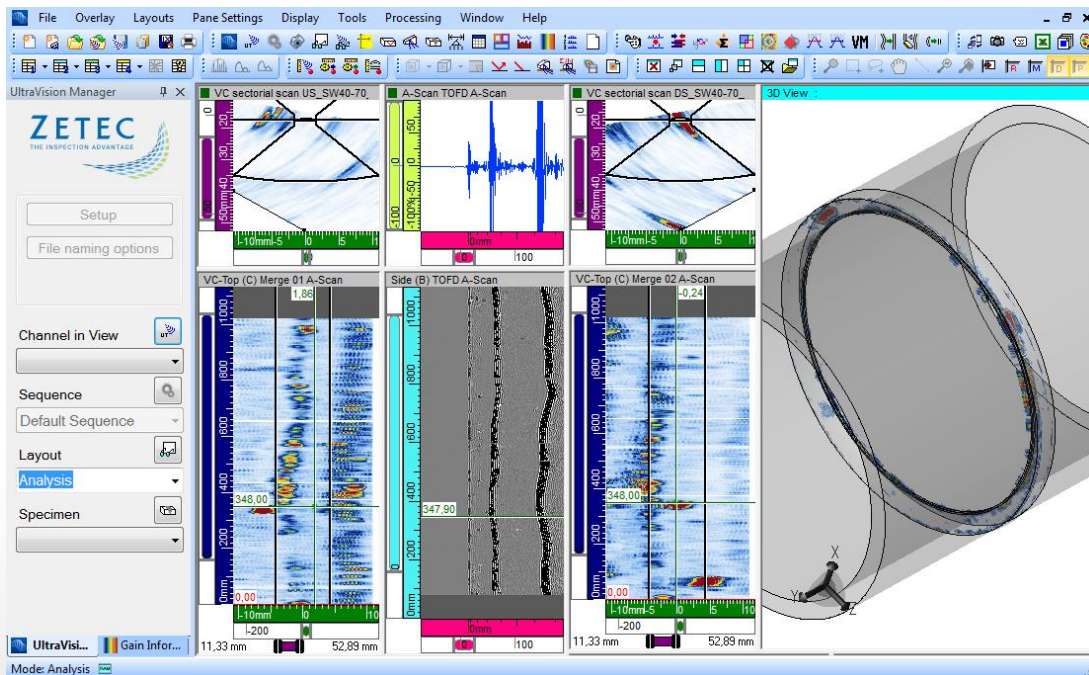


Table of Contents

UltraVision Classic - Fixed Anomalies	4
Bad behavior of live homing gate vs soft homing gate.....	4
Weld settings parameters not properly saved with setup	4
UltraVision Touch - Fixed Anomalies	5
FMC Raw Data Saving with 2x channels	5
NDT Sweeper – One wire index encoder needs to be reversed	5
Software crash occurring when entering a large time base value on a conventional/TOFD channel..	5
UltraVision Classic - Limitations and Remaining Anomalies	6
Lost of menu items when toggling between classic and touch interface.....	6
Volumetric merge – Sectorial interpolation not working properly for some configurations with 2D matrix probes, e.g. with skewed beams	6
Quartz – Incorrect TCG correction when using parallel firing mode	6
UltraVision Touch - Limitations and Remaining Anomalies.....	7
TOPAZ16/64 & TOPAZ64/64 – Splitter not functional.....	7
TOPAZ64 – Incorrect signal when first element of sweeping(linear) TFM is not 1	7
TFM TCG Calibration – Anomaly with visualization for probe with skew 180 & 270 degrees	7
TOPAZ – Unexpected shutdown when saving data after inspection pause	7
FMC Raw Data Saving when first element is not 1 gives wrong results	7
Weld Crawler – Not possible to inspect properly if selected encoder is not #1.....	8
Time Reversal - Inverting the encoder can cause no data feedback in inspection mode	8
Can't change channel using the “current channel” menu	8
Cameras drivers not installed properly.....	8
No visible views with French and Spanish language on PC.....	8

IMPORTANT MESSAGE

UltraVision® Classic & Touch 3.10R20 is the latest release for the UltraVision software. This new software version incorporates a series of new features and improvements as described in the *Product Bulletin* document.

Zetec is committed to the highest levels of product quality. Some limitations and remaining anomalies were detected during the validation campaign and are listed in this document.

When using UltraVision Classic or Touch 3.10R20, if you detect any other limitations or remaining anomalies not included in this document, please contact us at Support-UTProducts@zetec.com. Detailed information about the problem will help our software team to expedite the correction process.

UltraVision Classic - Fixed Anomalies

Bad behavior of live homing gate vs soft homing gate

Status:	Anomaly 4165
Description:	Live homing gate and soft homing were not behaving the same way depending on their settings.
Bypass:	Fixed.

Weld settings parameters not properly saved with setup

Status:	Anomaly 4165
Description:	After defining weld settings parameters and saving setup, the parameters are not saved properly. When user reopens the setups, the weld settings parameters are reverted back to their default values.
Bypass:	Fixed.

UltraVision Touch - Fixed Anomalies

FMC Raw Data Saving with 2x channels

Status:	Anomaly 3601
Description:	When performing 2x channel live TFM with FMC raw data saving, the 2x channel must have the same aperture in order to have a UVDataFMC file that is functional.
Correction:	Fixed.

NDT Sweeper – One wire index encoder needs to be reversed

Status:	Anomaly 3523
Description:	For NDT sweeper that are auto-detected, the encoder index resolution is positive (normal) but should be negative (inverted).
Correction:	Fixed.

Software crash occurring when entering a large time base value on a conventional/TOFD channel

Status:	Anomaly 4044, 4817
Description:	Unexpected crash when a large time base range value is entered in UT settings wizard for a conventional or TOFD channel.
Correction:	Fixed.

UltraVision Classic - Limitations and Remaining Anomalies

Lost of menu items when toggling between classic and touch interface

Status:	Anomaly 3494
Description:	When opening a UVData file in Touch interface mode, some menu items are missing upon switching back to Classic interface mode.
Bypass:	None.

Volumetric merge – Sectorial interpolation not working properly for some configurations with 2D matrix probes, e.g. with skewed beams

Status:	Limitation 5906
Description:	The sectorial interpolation of the Volumetric Merge is not working properly (creates erroneous images) for some configurations with 2-D matrix probes, e.g. when skewed beams are present in the data group.
Bypass:	Use Volumetric Merge without sectorial interpolation.

Quartz – Incorrect TCG correction when using parallel firing mode

Status:	Limitation 5978
Description:	When a linear scan is created in parallel firing mode and the TCG activated, different TCG correction is applied to each aperture.
Bypass:	None.

UltraVision Touch - Limitations and Remaining Anomalies

TOPAZ16/64 & TOPAZ64/64 – Splitter not functional

Status:	Anomaly 6059, 6064, 6153
Description:	When using a TOPAZ 16/64 or a TOPAZ64/64, the second connector of the splitter is not detected by the instrument.
Bypass:	Use 3.10R7 software version.

TOPAZ64 – Incorrect signal when first element of sweeping(linear) TFM is not 1

Status:	Limitation
Description:	When configuring a sweeping (linear) TFM, if the first element of the sweep is not set to 1, the generated signal is not correct.
Bypass:	Always set linear TFM with the 1 st element at 1.

TFM TCG Calibration – Anomaly with visualization for probe with skew 180 & 270 degrees

Status:	Anomaly 1681
Description:	When performing TFM TCG calibration with a probe configured with a skew of 180 or 270 degrees, and with frame location set at “relative”, the scan/index scale of the calibration traces is not correct.
Bypass:	Use frame location “Absolute”.

TOPAZ – Unexpected shutdown when saving data after inspection pause

Status:	Anomaly 6420
Description:	Unexpected TOPAZ shutdown when save data is done after pausing inspection and scrolling through data.
Bypass:	Resume inspection prior to saving data.

FMC Raw Data Saving when first element is not 1 gives wrong results

Status:	Anomaly 3206
Description:	When performing FMC raw data saving, the aperture must start with first element at #1 to give proper results.

Bypass: | Use first element #1 with probe orientation at normal (not reversed).

Weld Crawler – Not possible to inspect properly if selected encoder is not #1

Status: | Anomaly | 3180

Description: | If encoder ID selected is 2 with the weld crawler on auto-detect, the scan will not be performed correctly.

Bypass: | Use Encoder ID #1 with the weld crawler on auto-detect.

Time Reversal - Inverting the encoder can cause no data feedback in inspection mode

Status: | Anomaly | 3530

Description: | Changing the encoder polarity to “invert” can causes no data feedback in inspection mode for configuration with Time Reversal activated.

Bypass: | Use encoder in “normal” polarity for inspection mode.

Can't change channel using the “current channel” menu

Status: | Anomaly | 3499

Description: | When using multiple channels including at least one TFM channel, it is not possible to switch configuration parameters between channels using the menu Channel/Current Channel.

Bypass: | Click on the frame of the channel you want to select.

Cameras drivers not installed properly

Status: | Anomaly | 4741

Description: | Cameras drivers are not detected on any TOPAZ if UV Touch 3.10R2 has not been previously installed. Impossible to use the vision kit in that case.

Bypass: | Install 3.10R2 prior to installing 3.10R20.

No visible views with French and Spanish language on PC

Status: | Limitation | 5487

Description: |

Once software is set to French or Spanish language, no views are visible after a restart.

Bypass: Set language to English and restart software.

Quality

All work is performed in accordance with ZETEC Quality standards program, which complies with 10CFR50 Appendix B, ISO 9001:2015 and ISO/IEC 17025:2017.



Toll free: 800.643.1771 (USA)

info@zetec.com

www.ZETEC.com