

# UltraVision® ET

## Eddy Current Inspection Software for HX Tubing and Surface Applications

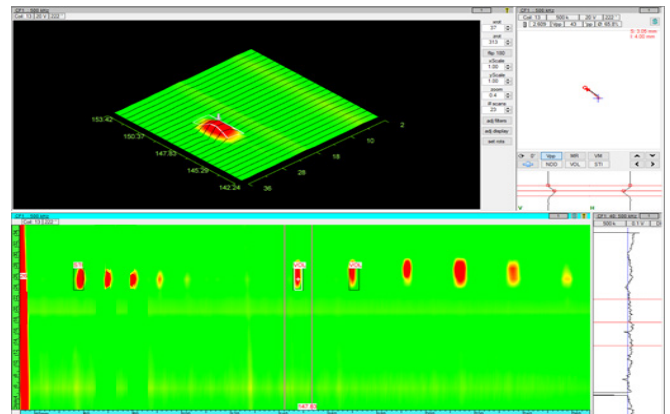
UltraVision ET leverages the simplicity of the industry proven UltraVision software interface for ultrasound and applies it to the eddy current heat exchanger (HX) tubing and surface inspection process. It is also designed to deliver an easy platform transition and a better user experience for former Multiview users.

Users will enjoy easy job set-up and technique configuration for faster inspections. The intuitive user workflow enables the user to easily step through a Bobbin, RFT, or MFL for heat exchanger tubing and a range of array, standard and customized applications dedicated to surface inspections. UltraVision ET provides a powerful platform for eddy current data acquisition, analysis, and reporting in one simple, easy-to-use application.

### FEATURES & BENEFITS

#### Surface Applications

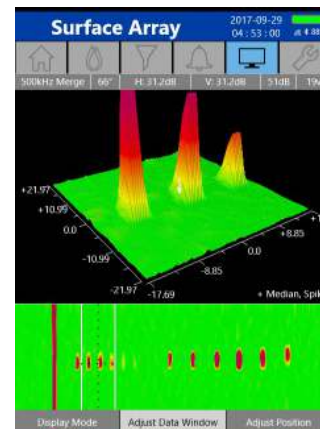
- Intuitive 2D and 3D C-Scans
- One-wire compatible probes with pre-configured probe database
- Easy C-Scan calibration using normalize tools and assisted array calibration
- Merge C-Scan to view transverse and axial indications at the same time
- Advanced sizing capabilities for pencil and surface array applications



*Intuitive 2D/3D C-scan offer the operator all the flexibility required to perform optimal surface array data acquisition and analysis*

#### Instruments Supported

- Ability to support and readback MIZ-21C data files
- Support for MIZ-200 instrument and Surf-X or custom surface array probes
- Control multiple instruments and support robotics (ZMC2 and ZMC4)



*UltraVision ET elevates MIZ-21C pencil and surface array data analysis and reporting capabilities, improving post data analysis and inspection productivity*

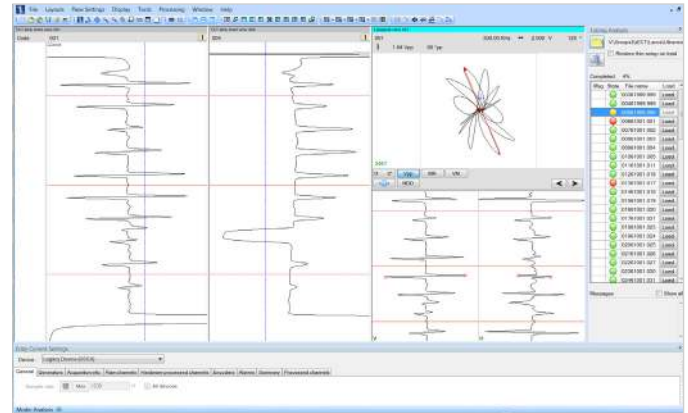
# UltraVision® ET

## Tubing Applications

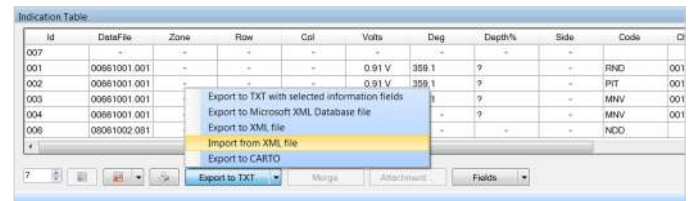
- Easy steps for setup, calibration, and acquisition
- Rapid technique selection using proposed setups
- Pre-defined tubing layouts
- In-second configuration adjustments from the acquisition screen
- Tube land-marking capabilities
- Customized screen linking
- Customized acquisition menus optimized for tubing and surface users
- Depth curve and detect indications

## Reporting Capabilities

- Import CSV and LST (CARTO) test plans to configure inspection lists
- Automatic screen captures with graphic tied to report entry
- Report format specific to surface array
- Reports with custom company and project logos using design report feature
- PDF reporting format



User interface borrows from the industry leading UltraVision software for ultrasound. User can rapidly select a complete setup for a given probe technique/material in less than one minute



Instantly generate reports and export to XML, TXT, or PDF formats

EQUIPMENT	ACQUISITION	ANALYSIS
<b>Instruments &amp; Legacy Software</b>	MIZ-200, ZMC2, ZMC4	MIZ-21C, MIZ-200
		MIZ-28, MIZ-27, TC7700, MS5800, TC6700, TC5700 Velocity/Multiview/ EddyView/ECVision
<b>Probes</b>	Conventional and French market tubing and surface array probes	
<b>Computer Minimum Requirements</b>	Operating system—Windows 10. Processor speed—2.4GHz or greater, multi-core. Memory—recommended 8GB RAM, 128GB HDD. Graphics card—2GB video memory for 3D graphics	
TRAINING	SUPPORT	SERVICE
World class instructor led training courses available to get you up to speed on UltraVision ET operation and application. For more information visit <a href="http://www.zetec.com/services/training">www.zetec.com/services/training</a>	On site, phone, and email based support available for UltraVision ET and all Zetec software products. For more information visit <a href="http://www.zetec.com/customer-support/customer-service">www.zetec.com/customer-support/customer-service</a>	Software service programs available to protect your software product investment and provide access to the latest features and functionality. For more information contact your Zetec sales executive or visit <a href="http://www.zetec.com/contact-us">www.zetec.com/contact-us</a>

## Zetec: Innovation That Delivers Results

For over 50 years, Zetec has advanced NDT standards and science. We provide new insight and control through inspection solutions that protect our customers' most important assets and ensure the quality of their products. By integrating design and engineering with our own manufacturing, Zetec delivers solutions that optimize productivity, safety and total cost of ownership.



Zetec holds ISO 9001 and ISO/IEC 17025 certifications



Zetec, Inc.  
8226 Bracken Pl. SE | Suite 100  
Snoqualmie, WA 98065  
Toll Free: 800.643.1771  
P: 425.974.2700