

UltraVision ET 3.9R19

Limitations and Remaining Anomalies

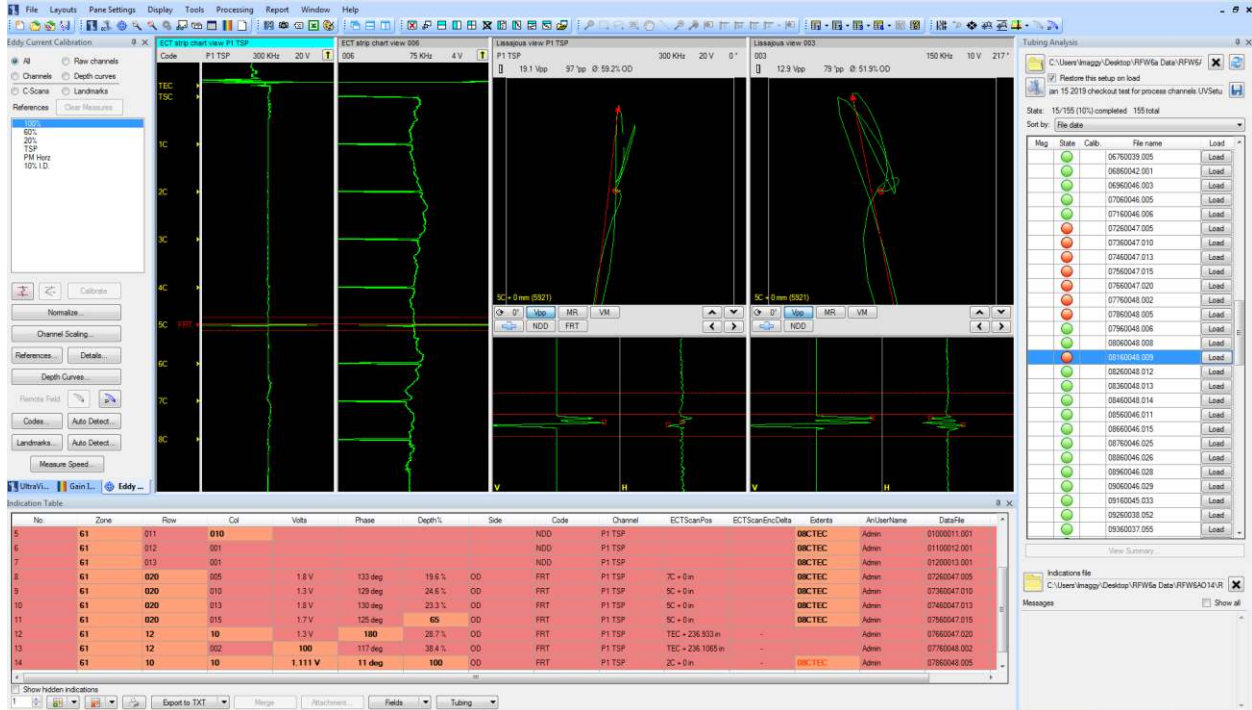


Table of Content

Table of Content	2
IMPORTANT MESSAGE.....	3
Limitations and Remaining Anomalies.....	4
Report - eddy current settings - duplicate signal injections and raw channels shown	4
Report: Not allow different selection of printed columns and size.....	4
Extents in Indications/Report do not consider Detected Landmarks	4
RFT calibration is wrong in automatic measurement.....	4
Amplitude Depth Curve measurement problem in Points mode	4
Tubing Inspection changes selected entry when start recording data.....	5

IMPORTANT MESSAGE

UltraVision ET 3.9R19 is the latest UltraVision release dedicated to tubing inspection with eddy current. This new software version incorporates a series of new features and improvements as described in the Product Bulletin document and in New/Updated features documents.

It has to be noted that only the (x86) UltraVision installer supports the data reading Velocity, MultiView, ECVision and MIZ-27/28 files. Those data file can be opened and analyzed with UltraVision ET, but the setup information is not loaded.

Zetec is committed to the highest levels of product quality. Some limitations and remaining anomalies were detected during the validation campaign and are listed in this document.

If when using UltraVision ET 3.9R19 you detect any other limitations or remaining anomalies not included in this document, please contact us at Support-UTProducts@zetec.com. Detailed information about the problem will help our software team to expedite the correction process.

Limitations and Remaining Anomalies

Report - eddy current settings - duplicate signal injections and raw channels shown

Status:	Anomaly B0542
Description:	There is the possibility of duplicate signal injections and raw channels entries in the report when using custom report option.
Bypass:	None.

Report: Not allow different selection of printed columns and size

Status:	Anomaly B0556
Description:	When printing a report, it is not possible to remove Zone, Row and Column and also cannot set size of printed columns.
Bypass:	None.

Extents in Indications/Report do not consider Detected Landmarks

Status:	Limitation B0306
Description:	The "Extents" value is only manually entered.
Bypass:	None.

RFT calibration is wrong in automatic measurement

Status:	Anomaly B0161
Description:	When calibrating a RFT channel using automatic measurement mode, the signal is calibrated with a 180° phase shift.
Bypass:	Manual and Two-Points measurement modes can be used.

Amplitude Depth Curve measurement problem in Points mode

Status:	Limitation B0403
Description:	When amplitude measured in Lissajous is outside the depth curve boundaries, no depth or incorrect depth measurement is performed.
Bypass:	None.

Tubing Inspection changes selected entry when start recording data

Status:	Limitation B0429
Description:	When a sorting pattern is selected in the Tubing Inspection component, another entry is selected right after the user asks to start recording and this ends up in creating the wrong data file. The other selected entry seems to be the one at the same index in the list when it is unsorted. i.e.: Consider a list like y-x-z sorted into x-y-z. When selecting the first entry which is x and then starting recording, this would end up in selecting entry y, which is the first entry in the unsorted version of the list.
Bypass:	Manually install .NET Framework 4.5.1 after installing UltraVision ET.

Quality

All work is done in accordance with ZETEC Quality standards program, which complies with 10CFR50 Appendix B, ISO 9001:2008 and ISO/IEC 17025:2005.



Toll free: 800.643.1771 (USA)

info@zetec.com

www.ZETEC.com