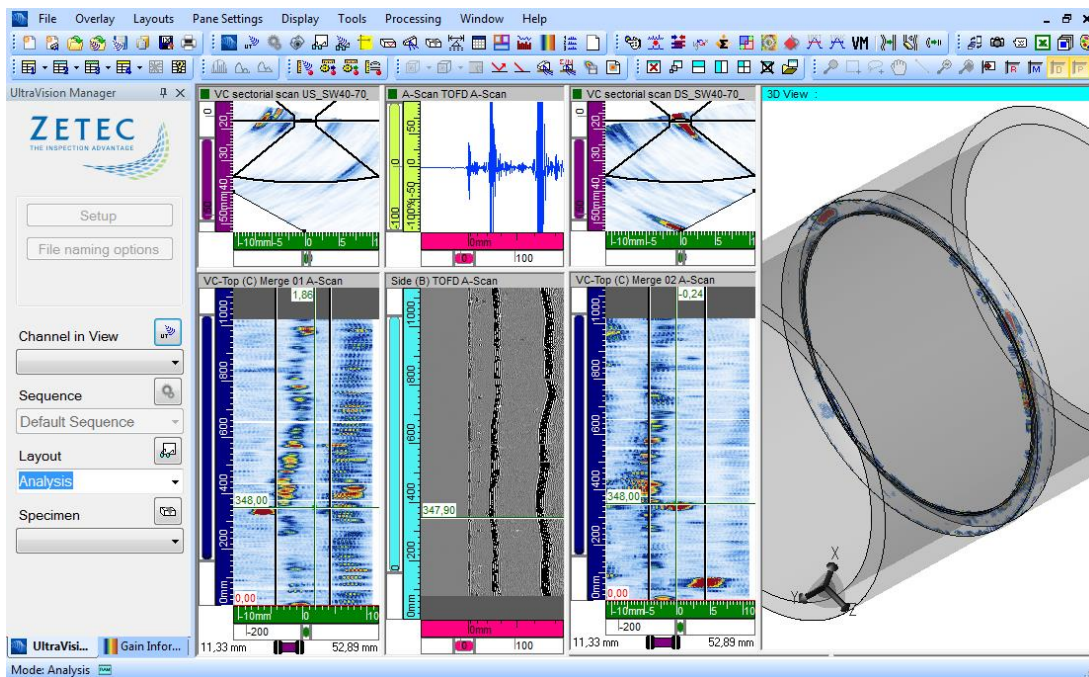


# UltraVision 3.8R30

## Limitations and Remaining Anomalies



## Table of Contents

IMPORTANT MESSAGE.....	4
Fixed Anomalies .....	5
Licensing.....	5
The Firing Sequencer is not available on an instrument when used as a Basic license key .....	5
Specimen.....	5
The automatic overlay length is limited to 5 m .....	5
Advanced Focal Law Calculator.....	5
Through Transmission not available with conventional probes .....	5
Calculator - in 125% Font size, missing fields .....	5
Mechanical Settings .....	6
Encoder overlap .....	6
Limit of the number of points in a mechanical sequence.....	6
Analysis .....	7
Polar Offset does not work in Merged views.....	7
Assisted Analysis - no detection of a through hole.....	7
Limitations and Remaining Anomalies.....	8
View Display .....	8
3D Drawing Tools: Display layout with Slicing or Cutting .....	8
Predefined Layouts: Gates not Completely Open.....	8
Special colors wrongly initialized on new C-Scan .....	8
Color Palette - Wrong color for Soft Gate2-Gate1.....	8
Advanced PA Calculator .....	9
Beam simulation on cylindrical specimens: Simulation stops at edge of specimen.....	9
DYNARAY - DDF not properly set to Reverse Probe.....	9
Tandem setups are not supported on TOPAZ.....	9
Through Transmission – True Depth indicates half the thickness .....	9
Specimen Settings.....	10
Specimen Rotation .....	10
Ultrasound Settings.....	10

Full Matrix Capture – Time Base Modification .....	10
Analysis and reporting .....	10
Soft C-Scan - Does not work on RF signal .....	10
Soft C-Scans are not available in C-Scan Stitching .....	10

## IMPORTANT MESSAGE

UltraVision® Classic 3.8R30 is the latest UltraVision release for the UltraVision Classic software. This new software version incorporates a series of new features and improvements as described in the *Product Bulletin* and *Technical Guidelines* documents.

Zetec is committed to the highest levels of product quality. Some limitations and remaining anomalies were detected during the validation campaign and are listed in this document.

If when using UltraVision Classic 3.8R30, you detect any other limitations or remaining anomalies not included in this document, please contact us at [Support-UTProducts@zetec.com](mailto:Support-UTProducts@zetec.com). Detailed information about the problem will help our software team to expedite the correction process.

## Fixed Anomalies

### Licensing

The Firing Sequencer is not available on an instrument when used as a Basic license key

<b>Status:</b>	<b>Anomaly</b>	<b>B2238</b>
<b>Description:</b>	The <b>Firing Sequencer</b> menu should be available when using a ZIRCON®, QUARTZ, DYNARAY®, DYNARAY Lite or Z-Scan UT instrument as a Basic license for UltraVision.	
<b>Correction:</b>	Using an instrument as a Basic UltraVision license key allows accessing to the <b>Firing Sequencer</b> menu.	

### Specimen

The automatic overlay length is limited to 5 m

<b>Status:</b>	<b>Anomaly</b>	<b>B2237</b>
<b>Description:</b>	The automatic overlay length is limited to 5 m.	
<b>Correction:</b>	The new overlay length limit is set to 10 m.	

### Advanced Focal Law Calculator

**Through Transmission** not available with conventional probes

<b>Status:</b>	<b>Anomaly</b>	<b>B1475</b>
<b>Description:</b>	<b>Through Transmission</b> is not supported in <b>Conventional Probes</b> .	
<b>Correction:</b>	<b>Through Transmission</b> is now supported in <b>Conventional Probes</b> .	

Calculator - in 125% Font size, missing fields

<b>Status:</b>	<b>Anomaly</b>	<b>B1746</b>
<b>Description:</b>	The fields <b>Transmitter Wave</b> and <b>Receiver Wave</b> in the probe section of the <b>Calculator</b> menu are either partially or completely absent, depending on the chosen font size and language.	

**Correction:** | **Transmitter** and **Receiver Wave** fields now size automatically and adapt when the display resolution changes.

## Mechanical Settings

### Encoder overlap

**Status:** | **Anomaly** | When using an internal clock

**Description:** | When using an internal clock, encoder values can overlap, resulting in unusable high encoder values.

**Bypass:** | None.

### Limit of the number of points in a mechanical sequence

**Status:** | **Anomaly** | B2205

**Description:** | The number of points allowed in the mechanical sequence is fixed to 16,000 points in scan, and 5,000 points in index.

**Bypass:** | The maximum number of points is now limited according to the available computer memory.

## Analysis

### Polar Offset does not work in **Merged** views

<b>Status:</b>	<b>Limitation</b>   <b>B0789</b>
<b>Description:</b>	In <b>Merged</b> views, when applied to a polar specimen, the offset cannot be used like in other view types.
<b>Correction:</b>	None.

### Assisted Analysis - no detection of a through hole

<b>Status:</b>	<b>Limitation</b>   <b>B1429</b>
<b>Description:</b>	If a through hole is not crossing your detection gate, there is <b>NO-DETECTION</b> data in in C-Scan. The assisted analysis thus has no data to work with and is not able to detect the through hole
<b>Correction:</b>	An option to consider <b>No Detection</b> as 0 has been added.

## Limitations and Remaining Anomalies

### View Display

#### 3D Drawing Tools: Display layout with Slicing or Cutting

<b>Status:</b>	<b>Anomaly</b>	<b>B0508</b>
<b>Description:</b>	After using the <b>3D Drawing Tools</b> , the display layout with the <b>Slicing</b> and <b>Cutting</b> tools are lost when switching layouts.	
<b>Bypass:</b>	None.	

#### Predefined Layouts: Gates not Completely Open

<b>Status:</b>	<b>Limitation</b>	<b>B0207</b>
<b>Description:</b>	When loading the predefined analysis layout <b>Analysis - PA - Top, Side, End</b> , the gates are completely closed in the <b>VC-End</b> view, instead of being completely open.	
<b>Bypass:</b>	None.	

#### Special colors wrongly initialized on new C-Scan

<b>Status:</b>	<b>Anomaly</b>	<b>B1717</b>
<b>Description:</b>	<b>Special color</b> is incorrectly applied to <b>No Synchro</b> data in Gate 0 when in <b>Synchro on Echo</b> .	
<b>Bypass:</b>	None.	

#### Color Palette - Wrong color for Soft Gate2-Gate1

<b>Status:</b>	<b>Anomaly</b>	<b>B0611</b>
<b>Description:</b>	Color palette has the wrong color for <b>Soft Gate2-Gate1</b> .	
<b>Bypass:</b>	None.	



## Advanced PA Calculator

Beam simulation on cylindrical specimens: Simulation stops at edge of specimen

<b>Status:</b>	<b>Anomaly</b>   B0184
<b>Description:</b>	When performing a beam simulation on a cylindrical specimen, the simulation ends once you reach the edges of the specimen.
<b>Bypass:</b>	None.

DYNARAY - DDF not properly set to Reverse Probe

<b>Status:</b>	<b>Anomaly</b>   B0212
<b>Description:</b>	With a DYNARAY, DDF is not properly implemented when the <b>Reversed Option</b> is selected in the calculator.
<b>Bypass:</b>	None.

Tandem setups are not supported on TOPAZ

<b>Status:</b>	<b>Anomaly</b>   B1707
<b>Description:</b>	When loading a <b>Tandem</b> setup on UltraVision Touch, configuration is set to <b>Pulse-Echo</b> , when it should be set to <b>Pitch/Catch</b> for the tandem.
<b>Bypass:</b>	None.

Through Transmission – True Depth indicates half the thickness

<b>Status:</b>	<b>Anomaly</b>   B1707
<b>Description:</b>	The <b>True Depth</b> timebase considers the signal has traveled the path twice, while in <b>Through Transmission</b> , it is done just once.
<b>Bypass:</b>	None.

## Specimen Settings

### Specimen Rotation

<b>Status:</b>	<b>Anomaly</b>   B0336
<b>Description:</b>	When rotating the specimen, the rotation value can range from -180° to +180°. When a value outside of this range is entered (e.g., 270°), the value is automatically limited to 180°.
<b>Bypass:</b>	None.

## Ultrasound Settings

### Full Matrix Capture – Time Base Modification

<b>Status:</b>	<b>Limitation</b>   B0318
<b>Description:</b>	With specific FMC configurations using a long timebase, the timebase values can be changed without prior notification to the user. FMC configurations using long timebases can define a data range that is too large for the unit's capacity.
<b>Bypass:</b>	None.

## Analysis and reporting

### Soft C-Scan - Does not work on RF signal

<b>Status:</b>	<b>Limitation</b>   B1747
<b>Description:</b>	The soft-gate takes only the positive amplitude instead of the maximum amplitude in absolute value.
<b>Bypass:</b>	None.

### Soft C-Scans are not available in C-Scan Stitching

<b>Status:</b>	<b>Limitation</b>   B1829
<b>Description:</b>	The C-Scans created offline cannot be selected in the C-Scan <b>Stitching</b> tool.
<b>Bypass:</b>	None.

## Quality

All work is performed in accordance with ZETEC Quality standards program, which complies with 10CFR50 Appendix B, ISO 9001:2008 and ISO/IEC 17025:2005.



Toll free: 800.643.1771 (USA)

[info@zetec.com](mailto:info@zetec.com)

[www.ZETEC.com](http://www.ZETEC.com)