

UltraVision TOUCH 3.8R16

(PC and TOPAZ versions)

Product Bulletin



Table of Contents

UltraVision Touch 3.8R16.....	3
Purpose of UltraVision Touch 3.8R16	3
UltraVision New Features and Improvements.....	4
Custom Palette.....	4
Enhanced Volumetric Merge Image Quality.....	4
Keep 1:1 Ratio	4
New Thickness Information Fields	5
C-Scan Polar View	5
Downloading and installing UltraVision Touch version 3.8R16 for TOPAZ.....	6

UltraVision Touch 3.8R16

Zetec has just released UltraVision Touch version 3.8R16. This software version can be used on the TOP Δ Z, TOP Δ Z¹⁶ and TOP Δ Z³² models as well as on a PC running Windows 7 or Windows 10.

This product bulletin presents an overview of the new features and changes that are included in the new UltraVision Touch 3.8R16 software release.

UltraVision Touch 3.8R16 is available in three embedded versions for the TOP Δ Z product family:

- **Topaz 3.8R16** for TOP Δ Z instruments
- **Topaz16 3.8R16** for TOP Δ Z¹⁶ instruments
- **Topaz 3.8R16 (x64)** for TOP Δ Z³² instruments

As well, UltraVision Touch 3.8R16 is available in two PC versions:

- **UltraVision Touch 3.8R16** for 32-bit version environments
- **UltraVision Touch 3.8R16(x64)** for 64-bit version environments

To download UltraVision Touch 3.8R16 or any other UltraVision version, and to obtain access to the latest software documentation, please visit www.zetec.com

Purpose of UltraVision Touch 3.8R16

UltraVision Touch 3.8R16 is Zetec's latest upgrade for Zetec's UltraVision Touch software. This software release includes several new features and improvements. Zetec's hardware and software development process is performed according to a quality system that is certified ISO 9001-2008.

With this certified software development process, Zetec guarantees that the changes between the previous UltraVision Touch versions (3.5R10, 3.6R1, 3.6R5, 3.7R1, 3.7R21, 3.8R7, 3.8R11 and 3.8R13) to UltraVision Touch 3.8R16 have no consequences on the sensitivity and the accuracy of the signal amplitude and flight time outputs displayed, recorded, or automatically processed by the software. This also includes additions of mathematical modules used for the positioning of indications or for geometric conditions adjustments.

UltraVision New Features and Improvements

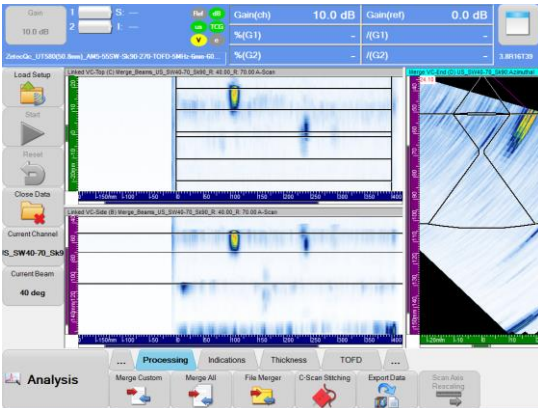
Custom Palette

UltraVision Touch 3.8R16 now offers the possibility of creating a personalized color palette.

The user can load a custom-color palette using an UvPalette file created in Ultravision3. The custom palette uses specific colors for amplitude or thickness, and offers the possibility to define distinctive colors for maximum (100%) and minimum (0%) values.



Enhanced Volumetric Merge Image Quality



Volumetric Merge is an important analysis tool for phased array UT data. An improved interpolation function is now available in Ultravision 3.8R16.

With this new function, the user can increase the volumetric view resolution resulting in a sharper and more defined image.

Keep 1:1 Ratio

During analysis, displaying UT data with the proper aspect ratio is often essential. UV Touch 3.8R16 now offers the possibility to lock the ratio to 1:1 to maintain proper signal shape.

The 1:1 ratio can be enabled for any volumetric or C-Scan views.



New Thickness Information Fields

ThickMin	1.62 mm	ThickMax	7.89 mm
TMinSPos	203.50 mm	TMinIPos	305.50 mm
Thick(Ref)	5.90 mm	MatLoss(Ref)	0.45 mm

ThickMin	Minimum Thickness on complete data range
ThickMax	Maximum Thickness on complete data range
TMinSPos	Minimum Thickness position in Scan
TMinIPos	Minimum Thickness position in Index
Thick(Ref)	Thickness at reference cursor location
MatLoss(Ref)	The material loss is the result of the part thickness min

New information fields for thickness analysis are now available in Ultravision 3.8R16.

The **Thickness Overview Information** field category is now available to allow efficient thickness assessment. The selection contains minimum and maximum thicknesses of the complete data range, the scan and index positions of the point of minimum thickness, the thickness at the current location of the reference cursor, and the material loss at that position.

C-Scan Polar View

For pipe corrosion evaluation, displaying the remaining thickness on a cross section can be very useful. For this reason, a Polar C-Scan representation is available in UV Touch 3.8R16.



Downloading and installing UltraVision Touch version 3.8R16 for TOPAZ

To upgrade the TOPAZ product family software to the new 3.8R16 version, please download the appropriate UltraVision Touch version according to your instrument model from our website:

www.zetec.com

UltraVision Touch is available in two main versions (embedded or PC-based) and there are several install files available according to the software version and platform:

- *UltraVisionTouch 3.8R16*: Install file of UltraVision Touch for PC in 32-bit version.
- *UltraVisionTouch 3.8R16 (x64)*: Install file of UltraVision Touch for PC in 64-bit version.
- *Topaz 3.8R16*: Install file of UltraVision Touch for TOPAZ.
- *Topaz16 3.8R16*: Install file of UltraVision Touch for TOPAZ¹⁶.
- *Topaz 3.8R16 (x64)*: Install file of UltraVision Touch for TOPAZ³².

To install the downloaded version on your TOPAZ:

1. Save the file and unzip it on a USB drive.
2. Connect the USB drive to your TOPAZ.
3. Go to **TOOLS > SYSTEM** and click on **System Update**.
4. In the dialog, you should already see the TOPAZ 3.8R16 installer from your USB drive, but if not, click on the arrow at the top-right corner of the dialog until you see your USB, and select the TOPAZ 3.8R16 installer.
5. Click **Install**.