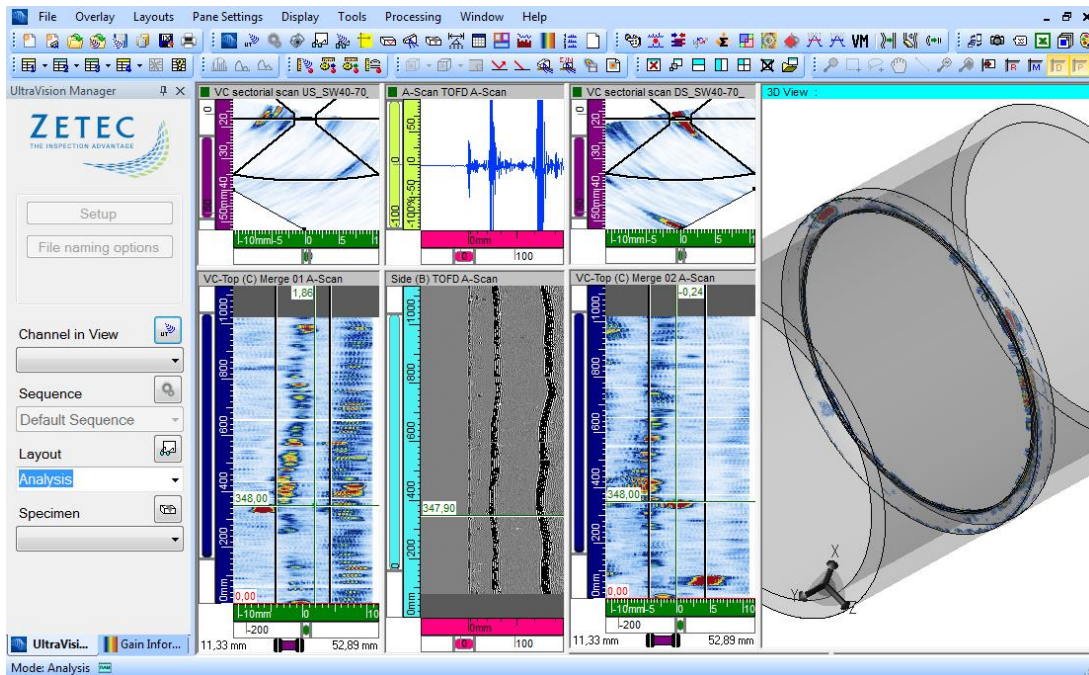


# ULTRAVISION 3.8R16

## Limitations and Remaining Anomalies



*UltraVision, a complete UT and Phased Array inspection package!*

## Table of Contents

Table of Contents.....	2
IMPORTANT MESSAGE.....	4
Fixed Anomalies .....	5
Licensing.....	5
When only connected to a hardware license, UVData format is not available in the in Open data file window.....	5
When only connected to a hardware license, the TCG cannot be turned on .....	5
Multi-device .....	5
In a multi-device configuration, information about the fan speed, battery charge and status is not available for every device .....	5
Specimen.....	6
RSP and DXF overlays are not displayed in Top(C) views .....	6
Advanced Focal Law Calculator.....	6
TFM simulation does not consider every selected element.....	6
UT Settings .....	6
TCG first point .....	6
Tools.....	7
Wedge Definition Mode is not kept when opening new documents.....	7
Limitations and Remaining Anomalies.....	8
View Display.....	8
3D Drawing Tools: Display layout with Slicing or Cutting .....	8
Predefined Layouts: Gates not Completely Open.....	8
Special colors wrongly initialized on new C-Scan .....	8
Color Palette - Wrong color for Soft Gate2-Gate1.....	8
Advanced PA Calculator.....	9
Beam simulation on cylindrical specimens: Simulation stops at edge of specimen.....	9
DYNARAY - DDF not properly set to Reverse Probe.....	9
Calculator - in 125% Font size, missing fields .....	9
Tandem setups are not supported on TOPAZ.....	9
Specimen Settings.....	10

Specimen Rotation.....	10
Ultrasound Settings.....	10
Full Matrix Capture – Time Base Modification .....	10
Soft C-Scan - Does not work on RF signal .....	10
Mechanical Settings.....	10
Encoder overlap.....	10
Analysis and reporting .....	11
Polar Offset does not work on views 'Merged'.....	11
Assisted Analysis - no detection of Through hole.....	11



## IMPORTANT MESSAGE

UltraVision® Classic 3.8R16 is the latest UltraVision release in UltraVision Classic software. This new version incorporates a series of new features and improvements as described in the Product Bulletin document.

Zetec is committed to the highest levels of product quality. Some limitations and remaining anomalies were detected during the validation campaign and are listed in this document.

If using UltraVision Classic 3.8R16 you detect any other limitations or remaining anomalies not included in this document, please contact us at the address: [Support-UTProducts@zetec.com](mailto:Support-UTProducts@zetec.com). Detailed information about the problem will help our software team to expedite the correction process.

## Fixed Anomalies

### Licensing

When only connected to a hardware license, UVData format is not available in the in Open data file window

<b>Status:</b>	<b>Anomaly</b>   <b>B2094</b>
<b>Description:</b>	When using a ZIRCON®, a QUARTZ, a DYNARAY®, DYNARAY Lite or a Z-Scan UT as a basic license for UltraVision, UVData format is not available in the in Open data file window, which made it impossible to open a data file.
<b>Correction:</b>	Using a ZIRCON®, a QUARTZ, a DYNARAY®, DYNARAY Lite or a Z-Scan UT give access to the same feature then a Basic license.

When only connected to a hardware license, the TCG cannot be turned on

<b>Status:</b>	<b>Anomaly</b>   <b>B2096</b>
<b>Description:</b>	When using a ZIRCON®, a QUARTZ, a DYNARAY®, DYNARAY Lite or a Z-Scan UT as a basic license for UltraVision, the TCG cannot be activated.
<b>Correction:</b>	Using a ZIRCON®, a QUARTZ, a DYNARAY®, DYNARAY Lite or a Z-Scan UT give access to the same feature then a Basic license.

### Multi-device

In a multi-device configuration, information about the fan speed, battery charge and status is not available for every device

<b>Status:</b>	<b>Limitation</b>   <b>B1872</b>
<b>Description:</b>	In multi-device, information about the fan speed, battery charge and status is not available for every device.
<b>Correction:</b>	Information about the connected device is now available through the Advanced Instrument Status button in the Status bar. Once in the Instrument Status window, a drop-down list allows to select one of the selected device.

## Specimen

RSP and DXF overlays are not displayed in Top(C) views

<b>Status:</b>	<b>Anomaly</b>   B2088
<b>Description:</b>	When using custom overlays (DXF and RSP format), the overlays are displayed on the Side(B), End(D) and Sectorial views, but not on the Top(C).
<b>Correction:</b>	Custom overlays are now displayed correctly on every view.

## Advanced Focal Law Calculator

TFM simulation does not consider every selected element

<b>Status:</b>	<b>Anomaly</b>   B2107
<b>Description:</b>	When doing a TFM Software Beam Summation, the results only includes the signal from one element.
<b>Correction:</b>	The TFM Software Beam Summation uses every selected element.

## UT Settings

TCG first point

<b>Status:</b>	<b>Limitation</b>   B1632
<b>Description:</b>	When TCG points are created in the UT settings or using the TCG calibration tool without the TCG enabled, the first point TCG is automatically set to Zero when TCG is enabled. This changes the TCG curve and it is necessary to recreate the missing point that will now become the second point.
<b>Correction:</b>	When activating analog or analog + digital TCG, a first hard point is created at 0mm and the current hard gain. If TCG points were created before the activation, the hard point is added and the previously existing list is shifted.

## Tools

Wedge Definition Mode is not kept when opening new documents

**Status:** Limitation | B2100

**Description:** Every time a new document was opened, the wedge definition mode was reset to Legacy mode instead of remembering the Wedge Definition mode selected in the Application options the last time it was changed.

**Correction:** When the Wedge Definition Mode is change in the Application options of the Tools menu, the change is applied to the current document and to every document further on.

## Limitations and Remaining Anomalies

### View Display

#### 3D Drawing Tools: Display layout with Slicing or Cutting

<b>Status:</b>	<b>Anomaly</b>	<b>B0508</b>
<b>Description:</b>	After using the 3D Drawing Tools, the display layout with slicing and cutting is lost when switching layouts.	
<b>Bypass:</b>	None.	

#### Predefined Layouts: Gates not Completely Open

<b>Status:</b>	<b>Limitation</b>	<b>B0207</b>
<b>Description:</b>	When loading the predefined analysis layout "Analysis - PA - Top, Side, End", the gates are completely closed in the VC-End view instead of completely open.	
<b>Bypass:</b>	None.	

#### Special colors wrongly initialized on new C-Scan

<b>Status:</b>	<b>Anomaly</b>	<b>B1717</b>
<b>Description:</b>	Special color is wrongly applied to No Synchro data in Gate 0 with Synchro on Echo.	
<b>Bypass:</b>	None.	

#### Color Palette - Wrong color for Soft Gate2-Gate1

<b>Status:</b>	<b>Anomaly</b>	<b>B0611</b>
<b>Description:</b>	Color palette has the wrong color for Soft Gate2-Gate1.	
<b>Bypass:</b>	None.	



## Advanced PA Calculator

Beam simulation on cylindrical specimens: Simulation stops at edge of specimen

<b>Status:</b>	<b>Anomaly</b>   B0184
<b>Description:</b>	When performing a beam simulation on a cylindrical specimen, the simulation ends once the edges of the specimen are reached.
<b>Bypass:</b>	None.

DYNARAY - DDF not properly set to Reverse Probe

<b>Status:</b>	<b>Anomaly</b>   B0212
<b>Description:</b>	When performing a beam simulation on a cylindrical specimen, the simulation ends once you reach the edges of the specimen.
<b>Bypass:</b>	None.

Calculator - in 125% Font size, missing fields

<b>Status:</b>	<b>Anomaly</b>   B1746
<b>Description:</b>	The fields Transmitter Wave and Receiver Wave, in the probe section are either partially or completely absent depending on the font size and language.
<b>Bypass:</b>	Reduce font size to 100% in system settings.

Tandem setups are not supported on TOPAZ

<b>Status:</b>	<b>Anomaly</b>   B1707
<b>Description:</b>	When loading a Tandem setup on UltraVision Touch, configuration is set to Pulse-Echo, when it should be set to Pitch/Catch for the tandem.
<b>Bypass:</b>	None.

## Specimen Settings

### Specimen Rotation

<b>Status:</b>	<b>Anomaly</b>   <b>B0366</b>
<b>Description:</b>	When rotating the specimen, the rotation value can range from -180° to 180°. When a value outside of this range is entered (ex: 270°), the value is automatically set at 180°.
<b>Bypass:</b>	None.

## Ultrasound Settings

### Full Matrix Capture – Time Base Modification

<b>Status:</b>	<b>Limitation</b>   <b>B0318</b>
<b>Description:</b>	With specific FMC configurations using a long timebase, timebase values can be changed without prior notification to the user. FMC configurations with longtime base can define a data range that is too big for the unit capacity.
<b>Bypass:</b>	None.

### Soft C-Scan - Does not work on RF signal

<b>Status:</b>	<b>Limitation</b>   <b>B1747</b>
<b>Description:</b>	The soft-gate takes only the positive amplitude instead of the maximum amplitude in absolute value.
<b>Bypass:</b>	None.

## Mechanical Settings

### Encoder overlap

<b>Status:</b>	<b>Anomaly</b>   <b>2144</b>
<b>Description:</b>	Sometimes the encoders overlap when using an internal clock, which results in impossibly high encoder values.
<b>Bypass:</b>	None.

## Analysis and reporting

Polar Offset does not work on views 'Merged'

<b>Status:</b>	<b>Limitation</b>   <b>B0789</b>
<b>Description:</b>	On Merged views, when applied on a polar specimen, cannot be offset like the others view types.
<b>Bypass:</b>	None.

Assisted Analysis - no detection of Through hole

<b>Status:</b>	<b>Limitation</b>   <b>B1429</b>
<b>Description:</b>	If a through hole is not crossing your detection gate, there's NO-DETECTION data in in C-Scan. The assisted analysis thus has no data to work with and is not able to detect the through hole
<b>Bypass:</b>	None.

### Quality

All work is done in accordance with ZETEC Quality standards program, which complies with 10CFR50 Appendix B, ISO 9001:2008 and ISO/IEC 17025:2005.



Toll free: 800.643.1771 (USA)

[info@zetec.com](mailto:info@zetec.com)

[www.ZETEC.com](http://www.ZETEC.com)