

# Surface Array Encoder

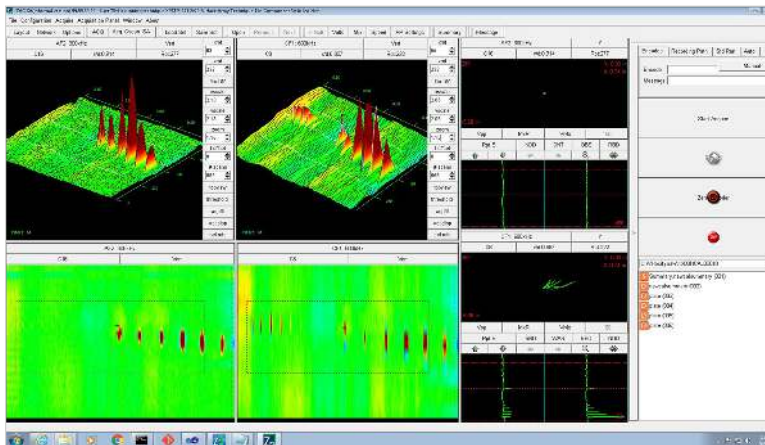
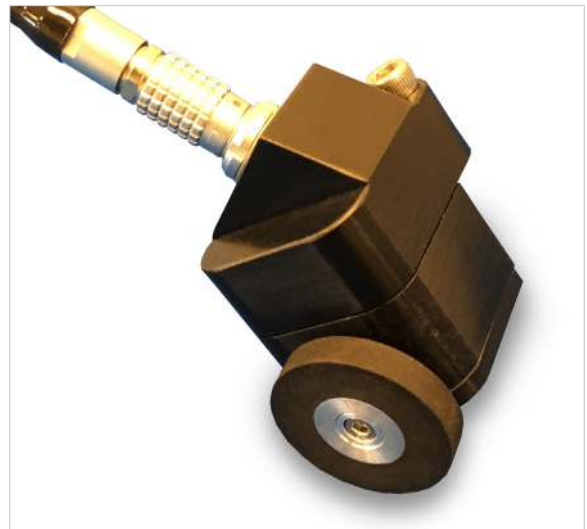
## Accurate High-Resolution Positional Information

The Zetec Surface Array Encoder provides highly accurate probe positional information. The encoder, combined with Zetec Velocity Acquisition software and MIZ-200A instrument, enable the ability to accurately locate and size indications while providing a full record of inspection. The encoder is designed for use with the Zetec Surface Array Flex Probe.

### FEATURES & BENEFITS

#### Accurate Locating and Sizing of Defects

- ▶ High Resolution—1303.8 counts/inch (51.33 counts/mm)
- ▶ Tactile rubber wheel
- ▶ 7 mm vertical wheel travel with 1 lb. static downward force applied to maintain wheel-to-surface contact
- ▶ Mounts on either side of the Surface Array Flex Probe
- ▶ Robust aluminum body with a black hard anodize surface finish
- ▶ User-replaceable wheel
- ▶ Waterproof design
- ▶ Replaceable cable (change lengths to suit application)



#### Encoder Enabled Velocity Software Features

- ▶ Configurable sampling density
- ▶ Configurable scan direction
- ▶ Motion activated sampling
- ▶ Configurable waterfall direction to match scan direction
- ▶ On-screen notification if scanning is too fast

# Surface Array Encoder

## Standard Configurations

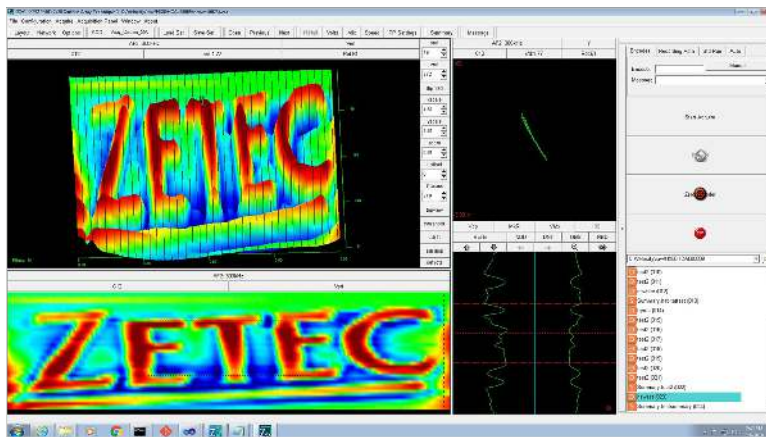
RESOLUTION	CABLE LENGTH	VERTICAL WHEEL TRAVEL	CONNECTOR
1303.8 counts/in. (51.33 counts/mm)	13 ft. (4 m) 33 ft. (10 m)	0.289 in. (7 mm)	MIZ-200 I/O Connector

## General Specifications

- ▶ Dimensions: 1.70 in. x 1.70 in. x 1.13 in.  
(43.13 mm x 43.31 mm x 28.58 mm)
- ▶ Weight: 0.31 lbs. (0.14 kg)
- ▶ Operational Temperature: 40°F to 113°F (4°C to 45°C)
- ▶ Recommended Storage Temperature: 55°F to 75°F  
(13°C to 24°C)

## Recommended Instruments and Software

- ▶ MIZ-200A Portable Eddy Current Instrument
- ▶ Velocity Acquisition and Analysis PC Software
- ▶ Zetec Surface Array Flex Probe



## Zetec: The Largest Supplier of Probes Worldwide

For nearly 50 years, Zetec has manufactured over 10,000 probe designs to meet the changing needs of the nondestructive testing (NDT) market. We are the leading supplier of probes worldwide covering most applications and techniques. With world-class manufacturing facilities, Zetec probes deliver the best results for our customers.



Zetec holds ISO 9001  
and ISO/IEC 17025  
certifications



Zetec, Inc.  
8226 Bracken Pl. SE | Suite 100  
Snoqualmie, WA 98065  
Toll Free: 800.643.1771  
P: 425.974.2700