

## UltraVision TOUCH 3.8R7 (PC and TOPAZ versions)

Product Bulletin



## Table of Content

Table of Content .....	2
UltraVision Touch 3.8R7 for TOPAZ .....	3
Purpose of UltraVision Touch 3.8R7 for TOPAZ.....	3
Important changes to UltraVision Touch.....	3
New UltraVision Touch Advanced .....	3
UltraVision Touch.....	4
2016 Software Service Program (SSP) .....	4
New TOPAZ <sup>32</sup> .....	4
UltraVision New Features and Improvements.....	5
Advanced Calculator Features .....	5
2D Matrix Array Support (UltraVision Touch Advanced only) .....	5
File.....	6
Automatic File Naming.....	6
Maximized View Optimization .....	6
Remember Last Folder .....	7
Specimen.....	7
Custom Overlay Line style.....	7
Important notice about Autocrossing gates .....	7
Downloading and installing UltraVision Touch 3.8R7 for TOPAZ .....	8

## UltraVision Touch 3.8R7 for TOPAZ

Zetec has just released UltraVision Touch 3.8R7 for TOPAZ and TOPAZ<sup>32</sup>. This product bulletin document presents an overview of the new features and changes in this new software release.

With TOPAZ<sup>32</sup> launch, Zetec is also introducing UltraVision Touch in 64 bits.

UltraVision Touch 3.8R7 is available in two versions:

- Topaz 3.8R7 to be used on existing TOPAZ instruments.
- Topaz 3.8R7 (x64) to be used on new TOPAZ<sup>32</sup> instruments.

For downloading this or other UltraVision versions and getting access to its latest documentation, please visit [www.zetec.com](http://www.zetec.com)

In the section [Downloading and installing UltraVision Touch 3.8R7](#) you will find the detailed instructions on how to download and install this software.

## Purpose of UltraVision Touch 3.8R7 for TOPAZ

UltraVision Touch 3.8R7 is Zetec's latest upgrade for UltraVision Touch software. This software release includes several new features. Zetec's hardware and software development process is performed according to a quality system that is certified ISO 9001-2008.

With this certified software development process, Zetec guarantees that the changes between previous UltraVision Touch (3.5R10, 3.6R2, 3.6R5, 3.7R1 and 3.7R21) to UltraVision Touch 3.8R7 have no consequences on the sensitivity and the accuracy of the signal amplitude and flight time outputs displayed, recorded or automatically processed by the software. This includes additions of mathematical modules used for the positioning of indications or for geometric conditions adjustments.

## Important changes to UltraVision Touch

### New UltraVision Touch Advanced

With UltraVision Touch 3.8R7 release, Zetec is introducing a new *UltraVision Touch* version called *UltraVision Touch Advanced*. This new *UltraVision Touch* version is based on our standard *UltraVision Touch* but also adds new features and tools previously available only in higher level version of *UltraVision Classic Basic* or *UltraVision Classic Advanced*.

Weld solution package that up to now was offered as a separate software option is now a standard feature of *UltraVision Touch* and *UltraVision Touch Advanced*.

UltraVision Touch Advance supports 2D Matrix Array probes and is unlocked by all PA Instruments including new TOPAZ<sup>32</sup>, but not by the previous version of TOPAZ.

Customers who previously purchased a *Weld License* package, will receive free of charge an upgrade license to UltraVision Touch Advanced. TOPAZ instruments having a Weld License can be upgraded to *UltraVision Touch Advanced*.

## UltraVision Touch

Starting with version 3.8R7, *UltraVision Touch* includes all previously available *UltraVision Touch* features and the Weld Option in the same package.

*UltraVision Touch* will be unlocked by all Zetec PA UT Instruments, including TOPAZ.

## 2016 Software Service Program (SSP)

Starting with UltraVision 3.8R7 release, all *UltraVision Classic* and *UltraVision Touch* versions running on PC will be managed under the Software Service Program. This means that one year free upgrade is offered at the purchase of the license key after which upgrades will need to be purchased according to the SSP guidelines.

All embedded UltraVision Touch versions running on TOPAZ units will continue to benefit from unlimited free of charge upgrades.

## New TOPAZ<sup>32</sup>

Zetec recently introduced TOPAZ<sup>32</sup> with improved processing capabilities. Our New TOPAZ<sup>32</sup> features a new onboard computer that improves the system computing performances while keeping unchanged the ultrasonic specifications.

New TOPAZ<sup>32</sup> will be running *UltraVision Touch Advanced* in a 64 bit environment allowing for faster processing and larger data files. Onboard data file size is increased to 2GB (previously 700MB).

For more information about New TOPAZ<sup>32</sup>, please visit [www.zetec.com/topaz](http://www.zetec.com/topaz)

# UltraVision New Features and Improvements

## Advanced Calculator Features

### 2D Matrix Array Support (UltraVision Touch Advanced only)

UltraVision Touch Advanced 3.8R7 adds support for 2D Matrix Array Probes in Pulse-Echo and Pitch-Catch configurations. It is now possible to prepare a full setup onboard TOPAZ<sup>32</sup> without using any other external software.

New Probes and Wedges can be easily added to the probe database to simplify the setup creation.

	UV Touch	UV Touch Adv.
Feature available for	N/A	●

**Calculator**

Top

37.73 mm

Refracted Start Angle	40.0 deg
Refracted Stop Angle	70.0 deg
Refracted Resolution	1.0 deg
Skew Start Angle	-5.0 deg
Skew Stop Angle	5.0 deg
Skew Resolution	1.0 deg
Primary Aperture	8
Primary First Element	1
Secondary Aperture	4
Secondary First Element	1
Reverse Probe	No
Transmitter Connection	1
Receiver Connection	65
Focal Point	Half Path

Accept Cancel

# File

## Automatic File Naming

It's now possible to configure an *Automatic File Naming* so each time an inspection is ended data file name is automatically proposed according to a series of user configurable rules.

Multiple increment options are available: incremental number, date, time, mechanical sequence info. It is also possible to enter a specific name or use the Propose Name option to allow UltraVision propose a data file name according to the configuration.

File Naming	
Action on save	Ask for name
Directory	C:\Users\lemonette\Documents\UltraVision\Data
Base Name	Flat_T50.00mm_1.5M8x4E28-16(AL)_40-70Sw
Sequence Info	No
Append Date	Yes
Append Time	No
Append Incremental	Yes
Preview: Flat_T50.00mm_1.5M8x4E28-16(AL)_40-70Sw_2016-03-21_001	
<input type="button" value="Propose Name"/> <input type="button" value="Accept"/>	

	UV Touch	UV Touch Adv.
Feature available for	●	●

## Maximized View Optimization

In previous UltraVision Touch embedded in TOPAZ, when a view was maximized (Online and offline), the whole system was responding slower. Maximized view is now optimized to perform at the same level of other view types.

	UV Touch	UV Touch Adv.
Feature available for	●	●

## Remember Last Folder

In *UltraVision Touch*, when saving a data file or setup file, the system always reverted to the default location, even if appropriate sub-folders were created and used before.

Several functions will remember the last folder where data was saved during the current session and propose this location as default values. This remember last location function is applied to:

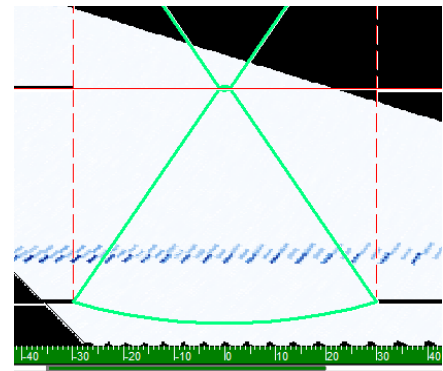
- Data file saving
- Setup file saving
- Data file loading
- Setup file loading

## Specimen

### Custom Overlay Line style

Color and line style for the Overlay display of HAZ, Weld and Specimen can now be customized separately. This function is available in the **Overlay** tab of the **Specimen** menu.

	UV Touch	UV Touch Adv.
Feature available for	●	●



## Important notice about Autocrossing gates

Gates could be set to *Autocrossing* mode where the detection threshold is changed according to the maximum signal amplitude detected within the gate.

Some unwanted side effects have been detected on this feature. It is temporarily disabled for improving its performance and will be included again in next *UltraVision* release.

## Downloading and installing UltraVision Touch 3.8R7 for TOPAZ

To upgrade TOPAZ software to the new 3.8R7 version, please download the *TOPAZ UV Touch 3.8R7* from our website: [www.zetec.com](http://www.zetec.com)

UltraVision Touch is available in two versions and there are several install files available according to the software version and platform to use:

- *UltraVisionTouch 3.8R7*: Install file of UltraVision Touch for PC in 32 bits version.
- *UltraVisionTouch 3.8R7 (x64)*: Install file of UltraVision Touch for PC in 64 bits version.
- *Topaz 3.8R7*: Install file of UltraVision Touch for TOPAZ.
- *Topaz 3.8R7 (x64)*: Install file of UltraVision Touch for TOPAZ<sup>32</sup>.

To install the downloaded version on your TOPAZ:

1. Save the file and unzip it on a USB drive;
2. Connect the USB drive to your TOPAZ
3. Go to **TOOLS > SYSTEM** and click on **System Update**
4. In the dialog, you should already see the TOPAZ 3.8R7 installer from your USB drive, but if not, click on the arrow at the top-right corner of the dialog until you see your USB and select the TOPAZ 3.8R7 installer;
5. Click on **Install**.