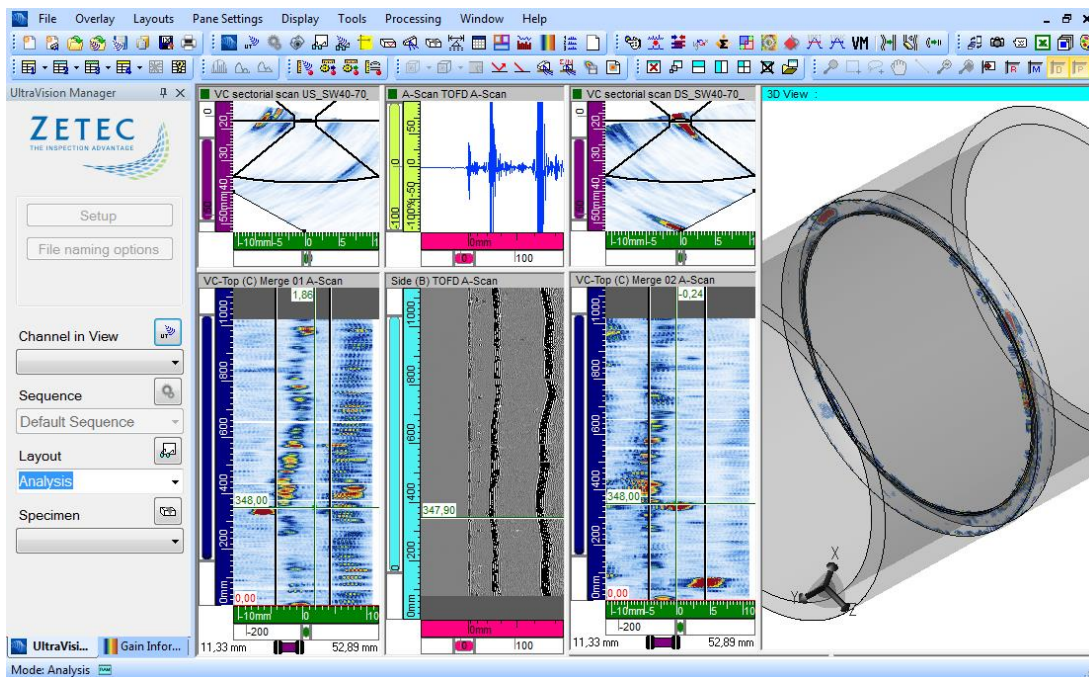


# ULTRAVISION 3.8R13

## Limitations and Remaining Anomalies



*UltraVision®, a complete UT and Phased Array inspection package!*

## Table of Contents

Table of Contents.....	2
IMPORTANT MESSAGE.....	4
Fixed Anomalies .....	5
Licensing.....	5
Error message when opening UltraVision a device not yet connected .....	5
Advanced Focal Law Calculator.....	5
Linear Laws – Improved Resolution .....	5
Impossible to deactivate elements in the Element Info window .....	5
Mechanical Settings .....	6
Software Clicker .....	6
Unable to set the Encoder resolution to 0.16deg.....	6
UT Settings .....	6
Autocrossing Gates function not available since version in 3.8R7 .....	6
Auto Crossing - Gate crossing point not working properly when using Averaging .....	6
DGS.....	7
Error message when loading setups .....	7
Analysis and Reporting.....	7
Smoothing on raw data.....	7
The display is not correctly refreshed when the overlay is changed in analysis .....	7
Limitations and Remaining Anomalies.....	8
View Display.....	8
3D Drawing Tools: Display layout with Slicing or Cutting .....	8
Predefined Layouts: Gates not Completely Open.....	8
Special colors badly initialized on new C-Scan.....	8
Color Palette - Wrong color for Soft Gate2-Gate1.....	8
Advanced PA Calculator.....	9
Beam simulation on cylindrical specimens: Simulation stops at edge of specimen.....	9
Calculator - in 125% Font size, missing fields .....	9
Tandem setups are not supported on TOPAZ.....	9

Specimen Settings.....	10
Specimen Rotation.....	10
Ultrasound Settings.....	10
Full Matrix Capture – Time Base Modification .....	10
TCG first point .....	10
Soft C-Scan - Does not work on RF signal .....	11
Analysis and reporting .....	11
Polar Offset does not work on 'Merged' views.....	11
Assisted Analysis - no detection of Through hole.....	11



## IMPORTANT MESSAGE

UltraVision® Classic 3.8R13 is the latest UltraVision release in UltraVision Classic software. This new version incorporates a series of new features and improvements as described in the Product Bulletin document.

Zetec is committed to the highest levels of product quality. Some limitations and remaining anomalies were detected during the validation campaign and are listed in this document.

If using UltraVision Classic 3.8R13 you detect any other limitations or remaining anomalies not included in this document, please contact us at the address: [Support-UTProducts@zetec.com](mailto:Support-UTProducts@zetec.com). Detailed information about the problem will help our software team to expedite the correction process.

## Fixed Anomalies

### Licensing

Error message when opening UltraVision a device not yet connected

<b>Status:</b>	<b>Anomaly</b>   <b>B1958</b>
<b>Description:</b>	When using a ZIRCON®, a QUARTZ, a DYNARAY®, DYNARAY Lite or a Z-Scan UT as a basic license for UltraVision, it can take several seconds before the device is detected by the software. During this time, if the user selects Connect to an Instrument, he will receive a licensing error message.
<b>Correction:</b>	The license check is now made after selecting the device in the instrument connection dialog box. For the Calculator and Analysis modes, the check is made after is made after selecting the mode in the Startup dialog box.

### Advanced Focal Law Calculator

Linear Laws – Improved Resolution

<b>Status:</b>	<b>Anomaly</b>   <b>B0512</b>
<b>Description:</b>	Using the "Improved Resolution" feature for linear focal laws, there is not safeguard if you are using the maximum aperture allowed by the instrument. Laws are programmed anyway.
<b>Correction:</b>	The created linear focal laws now use the

Impossible to deactivate elements in the Element Info window

<b>Status:</b>	<b>Anomaly</b>   <b>B1884</b>
<b>Description:</b>	In the Elements Info window of the Advanced PA Calculator, it is not possible to uncheck elements to turn them off.
<b>Correction:</b>	The elements can now be unchecked to turn them off.

## Mechanical Settings

### Software Clicker

<b>Status:</b>	<b>Anomaly</b>   <b>B1965</b>
<b>Description:</b>	At the end of the Scan line, the user presses "Index +" and then moves the probe to the next index. When launching the scanning according to the Scan axis, the index encoder displays very high values.
<b>Correction:</b>	The clicker indexer increases position one incremental step.

### Unable to set the Encoder resolution to 0.16deg

<b>Status:</b>	<b>Anomaly</b>   <b>B1963</b>
<b>Description:</b>	With an encoder resolution of 400 step/deg and a scan resolution of 0.18deg, it is impossible to set de mechanical sequence from 0 to 360deg.
<b>Correction:</b>	Correction implemented.

## UT Settings

### Autocrossing Gates function not available since version in 3.8R7

<b>Status:</b>	<b>Anomaly</b>   <b>B1797</b>
<b>Description:</b>	When Gates were set to Autocrossing mode, some unwanted effects were detected on signals rapidly changing their time-of-flight in consecutive firing cycles. Autocrossing function was disabled in version 3.8R7.
<b>Correction:</b>	Autocrossing mode implementation improved.

### Auto Crossing - Gate crossing point not working properly when using Averaging

<b>Status:</b>	<b>Limitation</b>   <b>B1730</b>
<b>Description:</b>	When using averaging, the auto-crossing gate sometimes reports the gate crossing point at the first sample of gate instead of its proper location.
<b>Correction:</b>	Averaging application on auto-crossing corrected.

## DGS

### Error message when loading setups

<b>Status:</b>	<b>Anomaly</b>   <b>B1957</b>
<b>Description:</b>	Different error messages when loading setup containing DGS curves.
<b>Correction:</b>	The setups are now loaded correctly.

## Analysis and Reporting

### Smoothing on raw data

<b>Status:</b>	<b>Limitation</b>   <b>B1815</b>
<b>Description:</b>	Sometimes the smoothing option (from <b>View Properties</b> ) does not work on raw data.
<b>Correction:</b>	The smoothing is now correctly applied on the raw data.

### The display is not correctly refreshed when the overlay is changed in analysis

<b>Status:</b>	<b>Limitation</b>   <b>B1902</b>
<b>Description:</b>	Changing the thickness moves the overlay according to the new thickness, instead of creating a new overlay.
<b>Correction:</b>	Overlay now correctly refreshes.

## Limitations and Remaining Anomalies

### View Display

#### 3D Drawing Tools: Display layout with Slicing or Cutting

<b>Status:</b>	<b>Anomaly</b>	<b>B0508</b>
<b>Description:</b>	After using the 3D Drawing Tools, the display layout with <b>Slicing</b> and <b>Cutting</b> is lost when switching layouts.	
<b>Bypass:</b>	None.	

#### Predefined Layouts: Gates not Completely Open

<b>Status:</b>	<b>Limitation</b>	<b>B0207</b>
<b>Description:</b>	When loading the predefined analysis layout "Analysis - PA - Top, Side, End", the gates are completely closed in the VC-End view instead of completely open.	
<b>Bypass:</b>	None.	

#### Special colors badly initialized on new C-Scan

<b>Status:</b>	<b>Anomaly</b>	<b>B1717</b>
<b>Description:</b>	Special color is wrongly applied to <b>No Synchro</b> data in Gate 0 with <b>Synchro on Echo</b> .	
<b>Bypass:</b>	None.	

#### Color Palette - Wrong color for Soft Gate2-Gate1

<b>Status:</b>	<b>Anomaly</b>	<b>B0611</b>
<b>Description:</b>	Color palette has the wrong color for Soft <b>Gate2-Gate1</b> .	
<b>Bypass:</b>	None.	



## Advanced PA Calculator

Beam simulation on cylindrical specimens: Simulation stops at edge of specimen

<b>Status:</b>	Anomaly   B0184
<b>Description:</b>	When performing a beam simulation on a cylindrical specimen, the simulation ends once the edges of the specimen are reached.
<b>Bypass:</b>	None.

Calculator - in 125% Font size, missing fields

<b>Status:</b>	Anomaly   B1746
<b>Description:</b>	The fields Transmitter Wave and Receiver Wave, in the probe section are either partially or completely absent depending on the font size and language.
<b>Bypass:</b>	Reduce font size to 100% in system settings.

Tandem setups are not supported on TOPAZ

<b>Status:</b>	Anomaly   B1707
<b>Description:</b>	If you load a Tandem setup on UltraVision Touch, configuration is set to Pulse-Echo, when it should be set to Pitch and Catch for the tandem to work.
<b>Bypass:</b>	None.

## Specimen Settings

### Specimen Rotation

<b>Status:</b>	<b>Anomaly</b>   B0366
<b>Description:</b>	When rotating the specimen, the rotation value can range from -180° to 180°. When a value outside of this range is entered (ex: 270°), the value is automatically set at 180°.
<b>Bypass:</b>	None.

## Ultrasound Settings

### Full Matrix Capture – Time Base Modification

<b>Status:</b>	<b>Limitation</b>   B0318
<b>Description:</b>	With specific FMC configurations using a long timebase, timebase values can be changed without prior notification to the user. FMC configurations with long timebase can define a data range that is too big for the unit capacity.
<b>Bypass:</b>	None.

### TCG first point

<b>Status:</b>	<b>Limitation</b>   B1632
<b>Description:</b>	When TCG points are created in the UT settings or using the TCG calibration tool without the TCG enabled, the first point TCG is automatically set at Zero when TCG is enabled. The missing point, that will become the second point, must be recreated.
<b>Bypass:</b>	<ol style="list-style-type: none"><li>1. Enable the TCG <b>before</b> creating the TCG points and doing a TCG Calibration.</li><li>2. If you don't want to enable the TCG just yet, manually create a first point at 0 mm with the same gain as the channel before creating other TGC points.</li></ol>

## Soft C-Scan - Does not work on RF signal

<b>Status:</b>	<b>Limitation</b>   <b>B1747</b>
<b>Description:</b>	The soft-gate takes only the positive amplitude instead of the maximum amplitude in absolute value.
<b>Bypass:</b>	None.

## Analysis and reporting

### Polar Offset does not work on 'Merged' views

<b>Status:</b>	<b>Limitation</b>   <b>B0789</b>
<b>Description:</b>	On Merged views, when applied to a polar specimen, cannot be offset like the others view types.
<b>Bypass:</b>	None.

### Assisted Analysis - no detection of Through hole

<b>Status:</b>	<b>Limitation</b>   <b>B1429</b>
<b>Description:</b>	If a through-hole is not crossing the detection gate, <b>NO-DETECTION data</b> is displayed in C-Scan. The assisted analysis thus has no data to work with and is not able to detect the through-hole
<b>Bypass:</b>	None.

## Quality

All work is done in accordance with ZETEC Quality standards program, which complies with 10CFR50 Appendix B, ISO 9001:2008 and ISO/IEC 17025:2005.



Toll free: 800.643.1771 (USA)

[info@zetec.com](mailto:info@zetec.com)

[www.ZETEC.com](http://www.ZETEC.com)

