

RevospECT® Pro Software

Automated Analysis Power You Control

RevospECT® Pro is the industry's first commercially available high powered, adaptable, and scalable automated analysis system. It provides end users the power and control to perform automated analysis of eddy current data. It has a proven track record in the field and meets rigorous industry standards for flaw analysis from bobbin, rotating and array inspection techniques.

FEATURES & BENEFITS

Cut Analysis Time & Resources

Automated analysis cuts time and resources required for inspections

- ▶ Fast distributed processing architecture
- ▶ Streamlined user interaction
- ▶ Utilizing less operators per fixture

Improve Inspection Accuracy

Parameter based processing of signals guarantees repeatable accuracy

- ▶ Intrinsically independent analysis algorithms
- ▶ Full tube coverage through comprehensive configuration
- ▶ Backed by seven years of field deployment experience

Control from Start to Finish

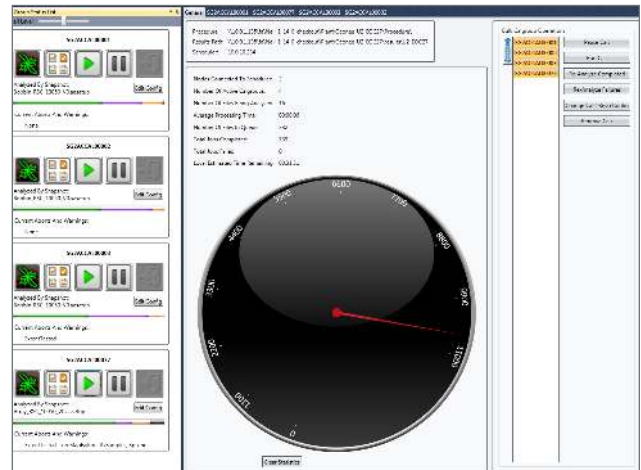
The ability to lock down user configuration guarantees control over reporting results every time

- ▶ User defined configuration set-up process
- ▶ Flexible results reporting & exporting
- ▶ Integrates with existing systems & processes
- ▶ User owned system

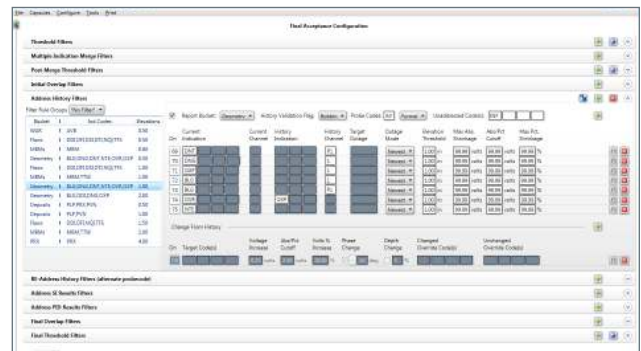
Historical Data Comparison

RevospECT Pro takes advantage of seamless integration with the optional Historical Data Comparison (HDC)* technology. History addressing occurs through auto-loading of historical results and applying rule-based logic for final reporting of indications.

*HDC for RevospECT Pro automates the process of retrieval and comparison to data at same tube locations from multiple historical datasets. Comparison to historical data provides the benefit of better identification of changing tube conditions and degradation over time.

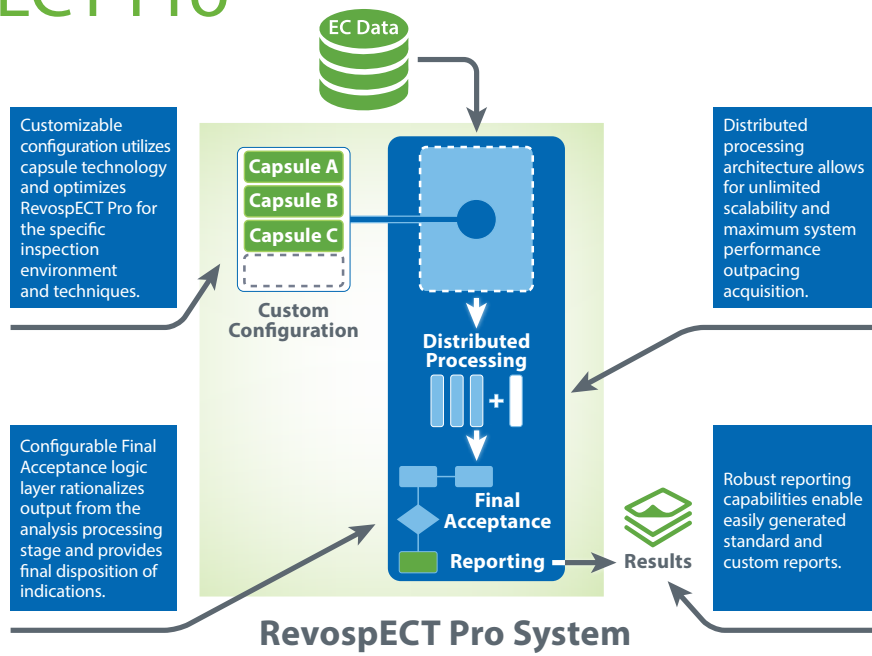


The RevospECT Pro operator dashboard simplifies control and manipulation of the data analysis operations. Featuring real time status feedback on processed tubes and large buttons for control and ease of operation ensure that new users or experts feel comfortable with administration of the RevospECT Pro system.



Final Acceptance layer gives the user control over the disposition of reported indications. The FA screen displays logical and easy to use controls over filters such as thresholds, merge types, overlap and history filters.

RevospECT Pro



SPECIFICATION OF THE REVOSPECT PRO SOFTWARE SYSTEM

Distributed processing farm nodes	Scalable to meet your job requirements
Operator dashboard stations	
Simultaneous data input streams	
Techniques supported	Bobbin, Rotating Coils, Array
Techniques that can be processed in parallel	HDC + Array + Bobbin
Speed for processing full-length tube bobbin data*	5 to 6 seconds per tube**
Speed for processing full-length tube array data*	15-20 seconds per tube**

*Based on a system configured for eight guide tubes, 8 dashboard stations and 4 quad core distributed processing farm machines.

**Assumes maximum parallel processing of flaw detection/reporting, historical data comparison (HDC), and Noise and Sludge reporting.

RECOMMENDED WINDOWS PC MACHINES FOR REVOSPECT SYSTEM

Minimum processor speed	2.4 GHz multi-core processor
Operating System	Microsoft Windows 7 Ultimate or Enterprise – 64bit
Memory	Recommend 8GB RAM, 500GB secondary storage
Graphics Card	256MB video memory
Networking	Recommend Gbit Ethernet Network card

TRAINING	SUPPORT	SERVICE
World class instructor led training courses available to get you up to speed on RevospECT Pro dashboard operation, building system configuration, and more. For more information visit www.zetec.com/services/training .	On site, phone, and email based support offerings available for RevospECT Pro deployments. For more information visit www.zetec.com/customer-support/customer-service	Dedicated team of certified RevospECT Configurators available to build a custom configuration to meet your specific job requirements. For more information visit www.zetec.com/services

For more information about RevospECT Pro, HDC, or other Zetec software products contact your local Zetec sales representative, or email us at info@zetec.com or visit www.zetec.com.



Zetec holds ISO 9001 and ISO/IEC 17025 certifications



Zetec, Inc.
8226 Bracken Pl. SE | Suite 100
Snoqualmie, WA 98065
Toll Free: 800.643.1771
P: 425.974.2700